

## ORIGINAL ARTICLE

# Randomized Trial of BCG Vaccine to Protect against Covid-19 in Health Care Workers

L.F. Pittet, N.L. Messina, F. Orsini, C.L. Moore, V. Abruzzo, S. Barry, R. Bonnici, M. Bonten, J. Campbell, J. Croda, M. Dalcolmo, K. Gardiner, G. Gell, S. Germano, A. Gomes-Silva, C. Goodall, A. Gwee, T. Jamieson, B. Jardim, T.R. Kollmann, M.V.G. Lacerda, K.J. Lee, M. Lucas, D.J. Lynn, L. Manning, H.S. Marshall, E. McDonald, C.F. Munns, S. Nicholson, A. O'Connell, R.D. de Oliveira, S. Perlen, K.P. Perrett, C. Prat-Aymerich, P.C. Richmond, J. Rodriguez-Baño, G. dos Santos, P.V. da Silva, J.W. Teo, P. Villanueva, A. Warris, N.J. Wood, A. Davidson, and N. Curtis, for the BRACE Trial Consortium Group\*

## ABSTRACT

**BACKGROUND**

The bacille Calmette–Guérin (BCG) vaccine has immunomodulatory “off-target” effects that have been hypothesized to protect against coronavirus disease 2019 (Covid-19).

**METHODS**

In this international, double-blind, placebo-controlled trial, we randomly assigned health care workers to receive the BCG-Denmark vaccine or saline placebo and followed them for 12 months. Symptomatic Covid-19 and severe Covid-19, the primary outcomes, were assessed at 6 months; the primary analyses involved the modified intention-to-treat population, which was restricted to participants with a negative test for severe acute respiratory syndrome coronavirus 2 at baseline.

**RESULTS**

A total of 3988 participants underwent randomization; recruitment ceased before the planned sample size was reached owing to the availability of Covid-19 vaccines. The modified intention-to-treat population included 84.9% of the participants who underwent randomization: 1703 in the BCG group and 1683 in the placebo group. The estimated risk of symptomatic Covid-19 by 6 months was 14.7% in the BCG group and 12.3% in the placebo group (risk difference, 2.4 percentage points; 95% confidence interval [CI],  $-0.7$  to  $5.5$ ;  $P=0.13$ ). The risk of severe Covid-19 by 6 months was 7.6% in the BCG group and 6.5% in the placebo group (risk difference, 1.1 percentage points; 95% CI,  $-1.2$  to  $3.5$ ;  $P=0.34$ ); the majority of participants who met the trial definition of severe Covid-19 were not hospitalized but were unable to work for at least 3 consecutive days. In supplementary and sensitivity analyses that used less conservative censoring rules, the risk differences were similar but the confidence intervals were narrower. There were five hospitalizations due to Covid-19 in each group (including one death in the placebo group). The hazard ratio for any Covid-19 episode in the BCG group as compared with the placebo group was 1.23 (95% CI, 0.96 to 1.59). No safety concerns were identified.

**CONCLUSIONS**

Vaccination with BCG-Denmark did not result in a lower risk of Covid-19 among health care workers than placebo. (Funded by the Bill and Melinda Gates Foundation and others; BRACE ClinicalTrials.gov number, NCT04327206.)

The authors' full names, academic degrees, and affiliations are listed in the Appendix. Dr. Curtis can be reached at [nigel.curtis@rch.org.au](mailto:nigel.curtis@rch.org.au) or at the Department of Paediatrics, University of Melbourne, Royal Children's Hospital Melbourne, 50 Flemington Rd., Parkville, VIC 3052, Australia.

\*Members of the BRACE Trial Consortium Group are listed in the Supplementary Appendix, available at [NEJM.org](https://www.nejm.org).

Drs. Pittet and Messina contributed equally to this article.

This is the *New England Journal of Medicine* version of record, which includes all *Journal* editing and enhancements. The Author Accepted Manuscript, which is the author's version after external peer review and before publication in the *Journal*, is available at PubMed Central.

N Engl J Med 2023;388:1582-96.

DOI: 10.1056/NEJMoa2212616

Copyright © 2023 Massachusetts Medical Society.

**I**N ADDITION TO PROTECTING AGAINST its target disease, tuberculosis, the bacille Calmette–Guérin (BCG) vaccine has immunomodulatory “off-target” effects that may protect against unrelated infections.<sup>1–3</sup> The BCG vaccine has been associated with reduced risk of death from any cause among infants<sup>4</sup> and a reduced risk of respiratory infections among adolescents and adults.<sup>5–7</sup>

Early in the severe acute respiratory syndrome coronavirus 2 (SARS-CoV-2) pandemic, it was proposed that the BCG vaccine could be repurposed to protect against coronavirus disease 2019 (Covid-19).<sup>8</sup> It was hypothesized that the immunomodulatory properties of this vaccine might enhance protection against SARS-CoV-2, thus bridging the gap until pathogen-specific vaccines were available.<sup>8,9</sup> In this randomized, controlled trial, BCG Vaccination to Reduce the Impact of COVID-19 in Healthcare Workers (BRACE), we aimed to determine whether the incidence and severity of Covid-19 among adult health care workers would be lower among those who received the BCG-Denmark vaccine than among those who received placebo.<sup>10</sup>

## METHODS

### TRIAL DESIGN AND SETTING

This phase 3, multicenter, randomized, controlled trial involving health care workers was conducted in two stages. Stage 1 (recruitment from March 2020 through May 2020) took place in Australia only. Stage 2 (recruitment from May 2020 through April 2021) took place in Australia, the Netherlands, Spain, the United Kingdom, and Brazil. In the double-blind stage 2 part of the trial, participants were randomly assigned in a 1:1 ratio to receive intradermal BCG-Denmark vaccine or saline placebo and were followed for 12 months, with the primary outcomes assessed at 6 months.<sup>10</sup> As prespecified in our statistical analysis plan,<sup>11</sup> this report focuses only on stage 2 of the trial because there was negligible SARS-CoV-2 community transmission during stage 1. The protocol, which has been published previously,<sup>10</sup> and the statistical analysis plan are available with the full text of this article at NEJM.org.

### OVERSIGHT

The trial was approved by the ethics committee at each site and overseen by a steering committee and an independent data and safety monitoring

board. The investigators designed the trial. A subgroup of authors collected and analyzed the data. The first four authors and last two authors vouch for the accuracy and completeness of the data and for the fidelity of the trial to the protocol. The funders had no role in the collection, analysis, or interpretation of data or in the preparation, review, or approval of the manuscript.

### PARTICIPANTS AND ELIGIBILITY CRITERIA

The eligibility of potential participants was ascertained during a baseline visit. Exclusion criteria included a previous positive SARS-CoV-2 test; contraindication to the BCG vaccine; receipt of BCG vaccine within the past year, any other live-attenuated vaccine within the past month, or any Covid-19–specific vaccine; and involvement in another Covid-19 prevention trial. At baseline, blood samples were obtained from all the participants for SARS-CoV-2 serologic testing; in Brazil, respiratory swab samples were also obtained for SARS-CoV-2 polymerase-chain-reaction (PCR) assay. All the participants provided written informed consent.

### RANDOMIZATION

The computer-generated randomization list was prepared by an independent statistician, and we used Web-based randomization, accessed by trial staff after consent had been obtained and baseline assessments had been performed. Randomization was stratified according to geographic region (Brazil, Europe, or Australia), age group (<40 years, 40 to 59 years, or ≥60 years), and the presence or absence of a coexisting condition. Participants, investigators, outcome assessors, data managers, trial statisticians, and trial staff were unaware of the trial-group assignments throughout the trial.

### INTERVENTIONS

A single dose of 0.1 ml of BCG-Denmark vaccine (AJ Vaccines; corresponding to 2 to 8 × 10<sup>5</sup> colony-forming units [CFUs] of *Mycobacterium bovis*, Danish strain 1331) or saline placebo was administered as an intradermal injection in the region of the deltoid muscle. A photograph was taken of the injection-site “bleb” (a small blister on the skin) to confirm correct administration.

### OUTCOME MEASURES

The trial had two primary outcomes: the incidence of symptomatic Covid-19 and the incidence



A Quick Take is available at NEJM.org

of severe Covid-19 by 6 months after randomization. Complete definitions of the primary and secondary outcomes are provided in the Supplementary Appendix, available at NEJM.org. In brief, symptomatic Covid-19 was defined, in accordance with the case definition used internationally at the start of the trial, as an episode of illness with fever or at least one symptom of respiratory disease (including sore throat, cough, and shortness of breath) and evidence of SARS-CoV-2 infection on PCR assay, rapid antigen test, or serologic test. Severe Covid-19 was defined as an episode of illness with evidence of SARS-CoV-2 infection (on PCR assay, rapid antigen test, or serologic test) plus at least one of the following as a consequence of Covid-19: death, hospitalization, or severe disease without hospitalization (defined, for the purpose of this trial, as being confined to bed or unable to work for  $\geq 3$  consecutive days, not resulting from quarantine or other restrictions).

Secondary outcomes included the time to onset of Covid-19; the number of Covid-19 episodes; the number of days with symptoms, absent from work, or confined to bed; complications (including pneumonia, receipt of oxygen, hospitalization, admission to a critical care unit, use of mechanical ventilation, or death); and asymptomatic infection. All these outcomes were assessed until 6 months after randomization. Vaccine-related adverse reactions were also monitored.

#### DATA AND SAMPLE COLLECTION

The REDCap platform was used for data collection.<sup>12</sup> Participants were asked weekly if they had been unwell with the use of a custom-built smartphone application (Trial Symptom Tracker, WeGuide), direct contact (telephone call or text message), or both. During each episode of illness, symptoms were recorded daily, and participants were asked to undergo SARS-CoV-2 testing. More detailed questionnaires were completed at baseline and every 3 months during follow-up. Additional information on hospitalizations was obtained from medical records. Blood samples were obtained at baseline and 3, 6, 9, and 12 months after randomization for measurement of anti-SARS-CoV-2 nucleocapsid antibodies (Roche Cobas Elecsys anti-SARS-CoV-2 assay).<sup>13</sup> A biobank of other samples was also established.

#### STATISTICAL ANALYSIS

The statistical analysis plan<sup>14</sup> was finalized and made publicly available before unblinding; full details, including the sample-size calculation (planned sample, 7244 participants), are available in the Supplementary Appendix. For the primary outcomes, survival analysis (with adjustment for stratification factors) was used to estimate the proportion of participants with a Covid-19 episode by 6 months in each group and the risk difference. Follow-up data were censored at 6 months, or at the time of receipt of the first Covid-19-specific vaccine, or when it could not be ascertained whether a Covid-19 episode had occurred (missing data for  $\geq 3$  consecutive days or an illness episode without a Covid-19 test result). Most analyses were performed in the modified intention-to-treat population, which was restricted to participants with a negative baseline SARS-CoV-2 test.

Prespecified supplementary analyses were performed to provide additional insights; separate analyses included follow-up time after receipt of a Covid-19-specific vaccine, excluded episodes that started within 14 days after randomization, censored data from participants at any subsequent vaccination (e.g., influenza vaccine), and involved the intention-to-treat population. Sensitivity analyses were also performed; separate analyses were restricted to episodes occurring on or after the date of receipt of BCG vaccine or placebo, used results from PCR assays and rapid antigen tests only (without serologic results) to define Covid-19 episodes (in the intention-to-treat population), and used less conservative censoring rules for missing data. Table S1 in the Supplementary Appendix details the primary, sensitivity, and supplementary estimands. Prespecified subgroup analyses were performed on the basis of age group (<40 years, 40 to 59 years, or  $\geq 60$  years), the presence of a coexisting condition (yes or no, and according to condition), geographic region (Brazil, Europe, or Australia), sex (male or female), and previous BCG vaccination (yes or no) for the primary analysis.

## RESULTS

#### TRIAL POPULATION

From May 14, 2020, through April 1, 2021, a total of 3988 participants were randomly as-

signed to receive BCG vaccine (1999 participants) or placebo (1989 participants) (Fig. 1). Recruitment was stopped prematurely before the planned sample size was reached because of the global rollout of Covid-19–specific vaccines. The baseline characteristics were similar in the two groups (Table 1 and Tables S2 and S3), apart from a slightly higher percentage of female participants in the placebo group than in the BCG group (75.1% vs. 72.3%). Participants were predominantly women (73.7%), with a mean ( $\pm$ SD) age of 42.0 $\pm$ 12.1 years. A large proportion of the participants were enrolled in Brazil (64.4%). Information on the representativeness of the trial participants is provided in Table S20. The baseline SARS-CoV-2 serologic status was positive in 14.1% of all the participants, and the baseline SARS-CoV-2 swab was positive in 2.7% of Brazilian participants (and inconclusive or missing in 0.5%). The modified intention-to-treat population consequently included 84.9% of the participants who underwent randomization (Fig. 1): 1703 in the BCG group and 1683 in the placebo group (Table 1). Overall, 98.0% of the participants were followed for 6 months or more, with a similar percentage in the two groups (Table S5).

#### PRIMARY OUTCOMES

In the first 6 months after randomization (modified intention-to-treat population), symptomatic Covid-19 occurred in 132 participants in the BCG group (adjusted estimated risk, 14.7%) and in 106 participants in the placebo group (12.3%) (difference, 2.4 percentage points; 95% confidence interval [CI],  $-0.7$  to  $5.5$ ;  $P=0.13$ ); severe Covid-19, as defined in this trial, occurred in 75 participants in the BCG group (7.6%) and in 61 participants in the placebo group (6.5%) (difference, 1.1 percentage points; 95% CI,  $-1.2$  to  $3.5$ ;  $P=0.34$ ) (Table 2, Fig. 2, and Tables S7 and S8). The majority of participants who met the trial definition of severe Covid-19 were not hospitalized but were unable to work for at least 3 consecutive days. In supplementary and sensitivity analyses that used less conservative censoring rules, the risk differences were similar but the confidence intervals were narrower (Fig. 2). This included the sensitivity analyses using results from PCR assays and rapid antigen tests only (without serologic results) and the analyses that did not account for Covid-19–specific vaccination.

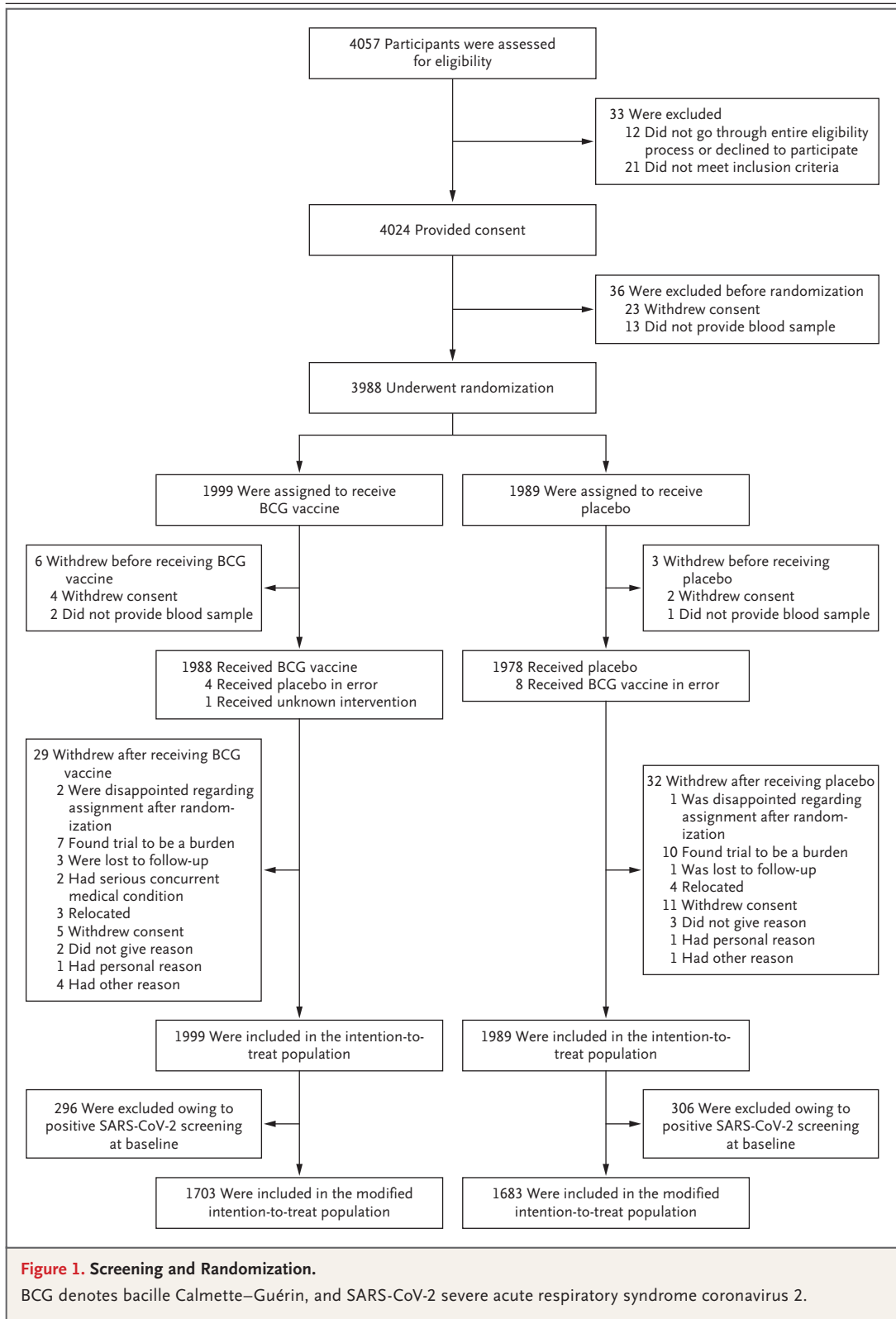
#### SECONDARY OUTCOMES

Results for the secondary outcomes are presented in Table 2 and Table S9 through S17. The probability of any Covid-19 episode within 6 months was greater in the BCG group than in the placebo group, although the confidence interval was wide and included no difference between the two groups (adjusted hazard ratio, 1.23; 95% CI, 0.96 to 1.59) (Table 2). In sensitivity analyses that were based on the results of PCR assays and rapid antigen tests only (adjusted hazard ratio, 1.38; 95% CI, 1.05 to 1.81) and the analyses that did not account for Covid-19–specific vaccination (adjusted hazard ratio, 1.24; 95% CI, 1.01 to 1.53), extended follow-up time resulted in more precise estimates and confidence intervals that excluded no difference between the two groups (Fig. S3). Five hospitalizations due to Covid-19 occurred in each group (including one death in the placebo group).

When the number of days with symptoms was compared between the BCG group and the placebo group, there was strong evidence of an interaction between the trial group and two randomization strata (age group and the presence or absence of a coexisting condition), which rendered an overall comparison between randomization groups noninterpretable. Post hoc subgroup analyses showed that among participants 60 years of age or older, the BCG group had fewer days with symptoms than the placebo group (incidence rate ratio, 0.32; 95% CI, 0.19 to 0.53) (Table 2 and Fig. S4), whereas no substantial difference between trial groups was seen among participants younger than 40 years of age and those 40 to 59 years of age. In the subgroup without coexisting conditions, the BCG group had fewer days with symptoms than the placebo group (incidence rate ratio, 0.73; 95% CI, 0.58 to 0.91), but the opposite was true in those with coexisting conditions (incidence rate ratio, 1.49; 95% CI, 0.88 to 2.52).

#### SUBGROUP ANALYSES

In prespecified subgroup analyses, there was little evidence that the treatment effect differed across most of the subgroups (Fig. 3). With respect to the influence of previous BCG vaccination, the results are consistent with the possibility of a greater risk of severe Covid-19 in the BCG group than in the placebo group among partici-



**Table 1. Characteristics of the Participants at Baseline.\***

Characteristic	Intention-to-Treat Population		Modified Intention-to-Treat Population	
	BCG Vaccine (N = 1999)	Placebo (N = 1989)	BCG Vaccine (N = 1703)	Placebo (N = 1683)
Female sex — no. (%)	1446 (72.3)	1494 (75.1)	1245 (73.1)	1281 (76.1)
Age — yr	42.0±12.1	42.0±12.1	42.8±12.0	42.8±12.0
Any coexisting condition — no. (%)	400 (20.0)	389 (19.6)	356 (20.9)	333 (19.8)
Chronic respiratory disease	126 (6.3)	108 (5.4)	111 (6.5)	92 (5.5)
Cardiovascular disease or hypertension	261 (13.1)	250 (12.6)	233 (13.7)	214 (12.7)
Diabetes mellitus	62 (3.1)	74 (3.7)	52 (3.1)	67 (4.0)
Obesity: BMI ≥30 — no./total no. (%)†	442/1967 (22.5)	417/1941 (21.5)	362/1672 (21.7)	338/1638 (20.6)
Smoker — no. (%)	196 (9.8)	211 (10.6)	176 (10.3)	184 (10.9)
Previous BCG vaccination — no. (%)	1537 (76.9)	1521 (76.5)	1262 (74.1)	1244 (73.9)
Positive SARS-CoV-2 serologic status at baseline — no. (%)	275 (13.8)	286 (14.4)	0	0
Positive SARS-CoV-2 PCR assay at baseline — no./total no. (%)‡	34/1285 (2.6)	36/1283 (2.8)	0/1006	0/999
Direct contact with patients — no. (%)	1622 (81.1)	1617 (81.3)	1363 (80.0)	1341 (79.7)
Occupation — no. (%)				
Nurse or midwife	398 (19.9)	370 (18.6)	359 (21.1)	326 (19.4)
Medical doctor	208 (10.4)	197 (9.9)	197 (11.6)	187 (11.1)
Allied health	384 (19.2)	392 (19.7)	329 (19.3)	339 (20.1)
Administrative or clerical	307 (15.4)	303 (15.2)	257 (15.1)	252 (15.0)
Patient service assistant or hospital maintenance	326 (16.3)	314 (15.8)	246 (14.4)	232 (13.8)
Other	376 (18.8)	413 (20.8)	315 (18.5)	347 (20.6)
Geographic region — no. (%)				
Australia	216 (10.8)	206 (10.4)	214 (12.6)	206 (12.2)
United Kingdom, the Netherlands, or Spain	498 (24.9)	500 (25.1)	483 (28.4)	478 (28.4)
Brazil	1285 (64.3)	1283 (64.5)	1006 (59.1)	999 (59.4)

\* Plus–minus values are means ±SD. The intention-to-treat population included all the participants who underwent randomization. The modified intention-to-treat population was restricted to participants with a negative test for severe acute respiratory syndrome coronavirus 2 (SARS-CoV-2) at baseline. Percentages may not total 100 because of rounding. BCG denotes bacille Calmette–Guérin, and PCR polymerase chain reaction.

† The body-mass index (BMI) is the weight in kilograms divided by the square of the height in meters.

‡ Baseline swabs were obtained in Brazil only.

participants who had not previously received BCG vaccination but not among those who received BCG revaccination. The probability of symptomatic or severe Covid-19 by 6 months appeared to be slightly higher in the BCG group than in the placebo group among participants with cardiovascular disease, those with hypertension, and those with chronic respiratory disease. In the sex subgroup analysis, although there was minimal evidence of an interaction between sex and the effect of BCG vaccination, the disease-free survival curves separated earlier in the male

subgroup than in the female subgroup (Figs. S1 and S2).

**SAFETY MONITORING**

Details on adverse events are provided in Tables S18 and S19. A total of 29 participants reported 30 serious adverse events: 20 in the BCG group and 9 in the placebo group. Apart from a painful injection-site abscess with lethargy in the BCG group, all serious adverse events were considered by the site investigator to be unrelated to the intervention.

**Table 2. Primary and Secondary Outcomes.\***

Outcome	BCG Vaccine (N=1703)	Placebo (N=1683)	Difference (95% CI)	P Value
<b>Primary outcomes</b>				
Symptomatic Covid-19 episode by 6 mo	132	106		
Event rate per 100 person-yr (95% CI)	29.4 (24.8 to 34.9)	24.4 (20.1 to 29.5)		
Unadjusted estimated percent (95% CI)	11.9 (9.9 to 13.9)	9.8 (7.9 to 11.8)	2.1 (-0.8 to 4.9)†	
Adjusted estimated percent (95% CI)‡	14.7 (12.0 to 17.3)	12.3 (9.7 to 14.8)	2.4 (-0.7 to 5.5)†	0.13
Severe Covid-19 episode by 6 mo — no.	75	61		
Death — no.	0	1		
Hospitalization — no.	5	4		
Severe disease without hospitalization — no.	70	56		
Too sick to get out of bed for ≥3 consecutive days	12	18		
Too sick to go to work but not in bed for ≥3 consecutive days	58	38		
Event rate per 100 person-yr	16.3 (13.0 to 20.5)	13.8 (10.8 to 17.8)		
Unadjusted estimated percent (95% CI)	6.7 (5.2 to 8.3)	5.5 (4.0 to 7.0)	1.2 (-1.0 to 3.4)†	
Adjusted estimated percent (95% CI)‡	7.6 (5.8 to 9.5)	6.5 (4.7 to 8.2)	1.1 (-1.2 to 3.5)†	0.34
<b>Secondary outcomes by 6 mo</b>				
Symptomatic or severe Covid-19 — no.	135	107	1.23 (0.96 to 1.59)‡§	
Pneumonia due to Covid-19 — no	7	7	0.93 (0.32 to 2.64)‡§	
Hospitalization due to Covid-19 — no.	5	5	0.93 (0.27 to 3.21)‡§	
Oxygen therapy due to Covid-19 — no. (%)	3 (0.2)	3 (0.2)		
Admission to critical care unit due to Covid-19 — no. (%)	2 (0.1)	2 (0.1)		
Mechanical ventilation due to Covid-19 — no. (%)	2 (0.1)	1 (0.1)		
Median no. of days unable to work due to Covid-19 (IQR)¶	3.0 (0.0 to 8.0)	4.0 (0.0 to 11.0)	0.88 (0.61 to 1.26)‡	
Median no. of days confined to bed due to Covid-19 (IQR)¶	0.0 (0.0 to 1.0)	0.0 (0.0 to 3.0)	0.76 (0.38 to 1.50)‡	
Median no. of episodes of Covid-19 (IQR)¶	1.0 (1.0 to 1.0)	1.0 (1.0 to 1.0)	0.95 (0.74 to 1.22)‡	
Median no. of days of unplanned absenteeism (IQR)	6.0 (3.0 to 11.0)	6.0 (2.0 to 11.0)	1.12 (0.99 to 1.27)‡	

Asymptomatic Covid-19 — no./total no.	12/1071	15/978	
Adjusted estimated percent (95% CI) ‡	1.1 (0.5 to 1.8)	1.5 (0.8 to 2.3)	-0.4 (-1.4 to 0.6) †
No. of days with symptoms due to Covid-19 (95% CI) ¶**			
According to age group			
<40 yr			
No. of participants evaluated	740	734	
Median no. of days (IQR)	15.0 (9.0 to 22.0)	15.0 (11.0 to 25.5)	0.79 (0.61 to 1.01) ‡
40 to 59 yr			
No. of participants evaluated	811	802	
Median no. of days (IQR)	16.0 (10.0 to 23.0)	14.0 (9.0 to 27.0)	0.92 (0.64 to 1.33) ‡
≥60 yr			
No. of participants evaluated	152	147	
Median no. of days (IQR)	16.5 (8.0 to 24.0)	38.0 (27.0 to 50.0)	0.32 (0.19 to 0.53) ‡
According to the presence or absence of a coexisting condition			
Presence of any coexisting condition			
No. of participants evaluated	356	333	
Median no. of days (IQR)	19.5 (15.5 to 31.5)	17.0 (12.0 to 22.0)	1.49 (0.88 to 2.52) ‡
Absence of any coexisting condition			
No. of participants evaluated	1347	1350	
Median no. of days (IQR)	13.0 (9.0 to 22.0)	15.5 (11.0 to 30.0)	0.73 (0.58 to 0.91) ‡

\* The widths of the confidence intervals have not been adjusted for multiplicity and may not be used in place of hypothesis testing. Covid-19 denotes coronavirus disease 2019, and IQR interquartile range.

† The difference is expressed in percentage points.

‡ Values have been adjusted for stratification factors used at randomization: age (<40 years, 40 to 59 years, or ≥60 years), geographic region, and the presence or absence of coexisting conditions.

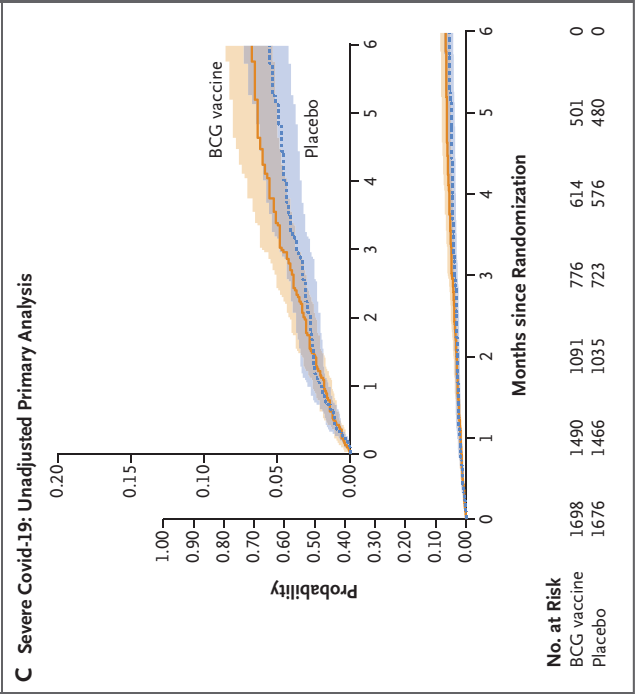
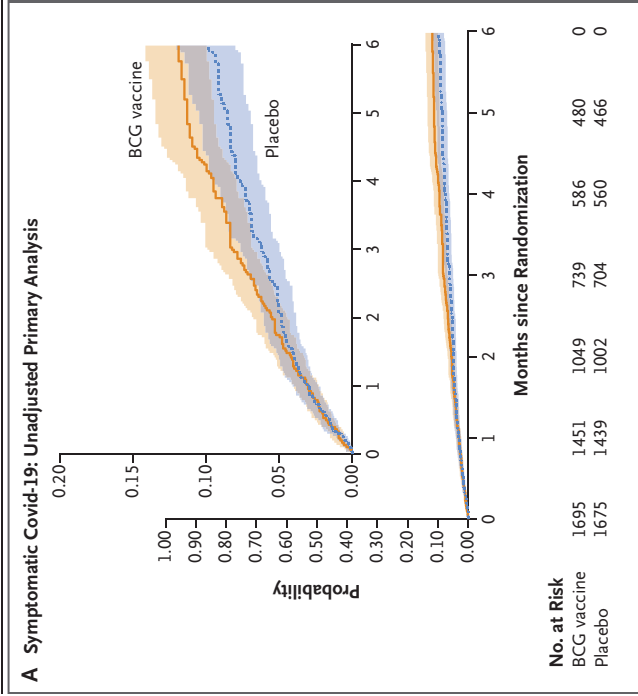
§ Shown is the hazard ratio.

¶ Data are for participants with symptomatic or severe Covid-19.

|| Shown is the incidence rate ratio.

\*\* The number of days with symptoms is presented according to age group and the presence or absence of coexisting conditions, owing to significant interactions between treatment group and age group and between treatment group and the presence or absence of coexisting conditions, which rendered the main between-group comparison noninterpretable.





### B Symptomatic Covid-19: Primary, Sensitivity, and Supplementary Analyses

Analysis	Person-Yr	BCG Vaccine no. with event (estimated percent)	Placebo no. with event (estimated percent)	Between-Group Difference (95% CI) percentage points
Primary analysis (modified intention-to-treat population)	876	132 (14.7)	106 (12.3)	2.4 (-0.7 to 5.5)
Including follow-up time after Covid-19 vaccination	1516	196 (12.0)	159 (9.8)	2.2 (0.1 to 4.3)
Excluding episodes ≤14 days after randomization	751	104 (14.0)	81 (11.5)	2.5 (-0.8 to 5.8)
Censoring data from participants at any vaccination	796	122 (14.4)	101 (12.2)	2.1 (-1.1 to 5.3)
Using the intention-to-treat population	990	145 (13.9)	118 (11.4)	2.5 (-0.3 to 5.3)
Including episodes on or after date of receipt of trial intervention	875	132 (14.6)	106 (12.2)	2.4 (-0.9 to 5.7)
Using PCR and RAT results only (intention-to-treat population)	945	125 (12.0)	94 (9.0)	3.0 (0.3 to 5.6)
Using less conservative censoring rules for missing data	886	136 (15.0)	108 (12.4)	2.6 (-0.6 to 5.7)

### D Severe Covid-19: Primary, Sensitivity, and Supplementary Analyses

Analysis	Person-Yr	BCG Vaccine no. with event (estimated percent)	Placebo no. with event (estimated percent)	Between-Group Difference (95% CI) percentage points
Primary analysis (modified intention-to-treat population)	901	75 (7.6)	61 (6.5)	1.1 (-1.2 to 3.5)
Including follow-up time after Covid-19 vaccination	1593	118 (7.0)	94 (5.7)	1.3 (-0.4 to 3.0)
Excluding episodes ≤14 days after randomization	767	59 (7.3)	44 (5.7)	1.5 (-0.9 to 4.0)
Censoring data from participants at any vaccination	818	72 (7.8)	56 (6.3)	1.5 (-0.9 to 4.0)
Using the intention-to-treat population	1028	80 (6.8)	64 (5.6)	1.2 (-0.8 to 3.2)
Including episodes on or after date of receipt of trial intervention	901	75 (7.6)	61 (6.5)	1.1 (-1.2 to 3.4)
Using PCR and RAT results only (intention-to-treat population)	1023	74 (6.1)	58 (4.9)	1.2 (-0.7 to 3.1)
Using less conservative censoring rules for missing data	907	75 (7.6)	61 (6.4)	1.2 (-1.2 to 3.5)

**Figure 2 (facing page). Primary Outcomes.**

The primary outcomes were symptomatic coronavirus disease 2019 (Covid-19) and severe Covid-19. Panels A and C show Kaplan–Meier curves with 95% confidence intervals in shaded areas (unadjusted primary analyses in the modified intention-to-treat population). Insets show the same data on an expanded y axis. In Panels B and D, forest plots show the between-group difference in the percentage of participants with symptomatic or severe Covid-19, with 95% confidence intervals (adjusted for stratification factors used in randomization; primary, sensitivity, and supplementary analyses). The widths of the confidence intervals for sensitivity and supplementary analyses have not been adjusted for multiplicity and may not be used in place of hypothesis testing. PCR denotes polymerase chain reaction, and RAT rapid antigen test.

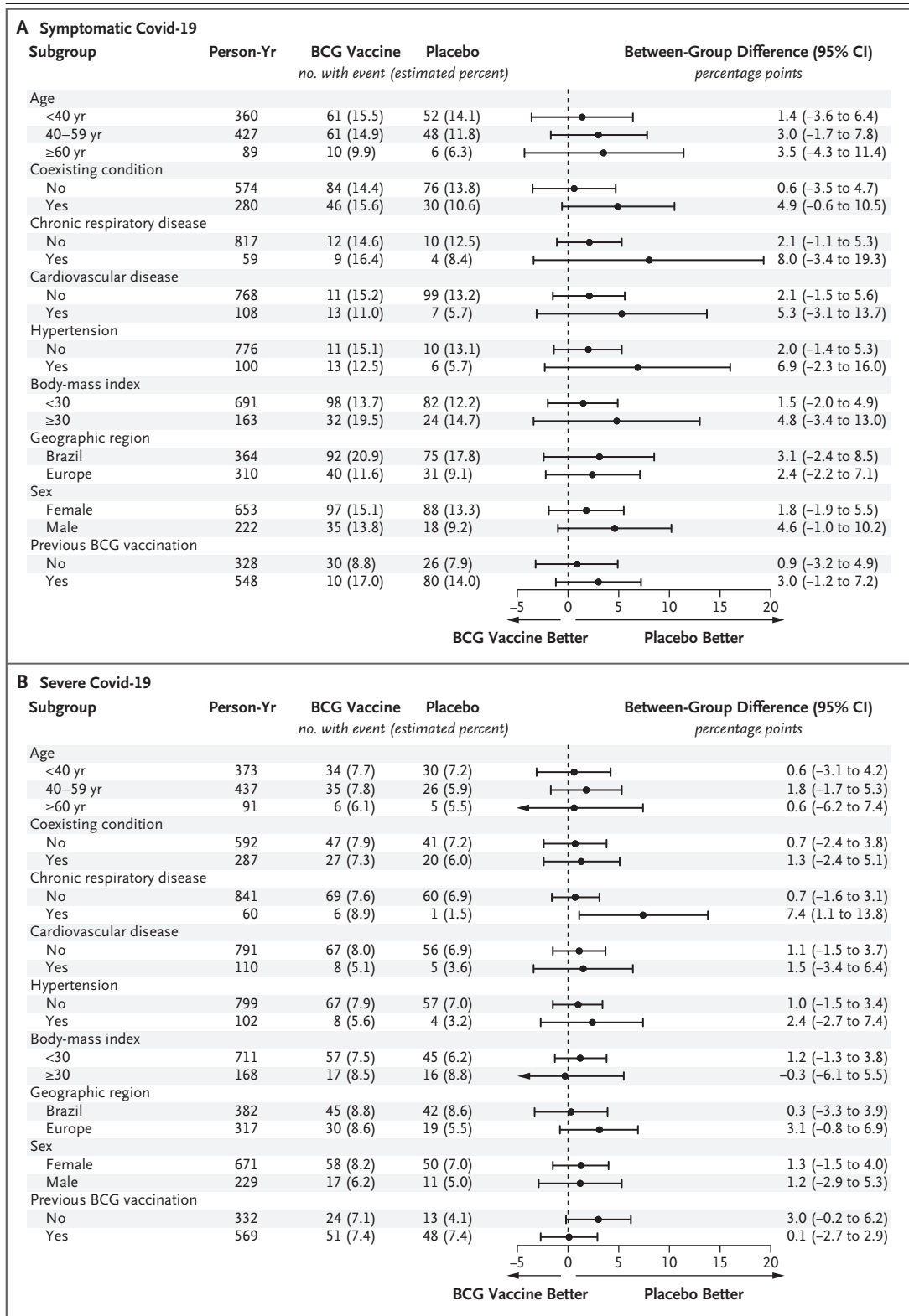
## DISCUSSION

In this multisite, double-blind, randomized, controlled trial involving health care workers in five countries, vaccination with BCG-Denmark did not result in a lower risk of Covid-19 within 6 months than placebo. It is notable that the risk of an episode of Covid-19 was higher in the BCG group than in the placebo group, although the confidence interval around this estimate was wide and crossed zero.

Previous studies that investigated the ability of the BCG vaccine to protect against Covid-19 in adults<sup>15-23</sup> and in animal models<sup>24-27</sup> have shown conflicting results. Retrospective and ecologic studies investigating the association between Covid-19 and history of BCG vaccination or national BCG vaccination policy or coverage are intrinsically limited by many biases, including the long period between BCG vaccination and SARS-CoV-2 exposure.<sup>15</sup> Trials have also shown conflicting results.<sup>16-23</sup> In a nonrandomized trial involving 280 health care workers in the United Arab Emirates, of 71 participants who received BCG revaccination (BCG-Russia), none reported Covid-19, as compared with 18 of 209 participants (8.6%) who declined revaccination.<sup>22</sup> In contrast, randomized, controlled trials of BCG vaccination, with the exception of one, have shown no protective effect against Covid-19. In ACTIVATE-2 (A Randomized Clinical Trial for Enhanced Trained Immune Responses through BCG Vaccination to Prevent Infections by COVID-19), which involved 301 participants 50 years of age or older in Greece, the cumula-

tive incidence of “presumed Covid-19” was lower after the receipt of BCG-Moscow vaccine than after the receipt of placebo, but the primary outcome was defined as possible, probable, or definite Covid-19 (without the requirement for a positive SARS-CoV-2 test).<sup>16</sup> When the incidence of PCR-proven Covid-19 cases was assessed, the difference between the two groups was not significant.<sup>16</sup> The BCG-CORONA trial, which involved 1000 participants in South Africa, showed a higher risk of severe respiratory tract infections after BCG revaccination (BCG-Denmark) than after receipt of placebo but no effect on Covid-19 risk. However, the risk of hospitalization due to Covid-19 was twice as high in the BCG group as in the placebo group, but the confidence interval was wide and included 1 (hazard ratio, 2.0; 95% CI, 0.7 to 5.9;  $P=0.20$ ).<sup>17</sup> In two trials conducted in the Netherlands, BCG-Denmark vaccination had no effect on the incidence of Covid-19 episodes (as a secondary outcome) among health care workers (1511 participants)<sup>18</sup> or among participants 60 years of age or older (2014 participants).<sup>19</sup> In a trial involving 138 participants in Brazil, BCG revaccination of health care workers with BCG-Moscow did not protect against Covid-19.<sup>20</sup> Similar findings were reported in a trial involving 354 participants in Poland after BCG revaccination with BCG-Moreau.<sup>21</sup> Finally, in an ongoing trial investigating the effect of BCG vaccination on glycemic control in patients with type 1 diabetes in the United States, during a 15-month period, only 1 of 96 participants who had received three doses of BCG-Tokyo (given 2 to 3 years before) had Covid-19, as compared with 6 of 48 participants who received placebo.<sup>23</sup>

The inconsistent results from these and other trials of the off-target effects of the BCG vaccine are probably explained by a number of factors, including differing study designs; varying age (infants, adults, and older adults), sex distribution, and proportion of participants who had previously received BCG vaccine; use of different BCG strains (with varying CFUs or dose)<sup>28,29</sup> and number of doses; and different periods before pathogen exposure. All these factors warrant further investigation. BCG-induced effects might also vary among pathogens. In an animal model, BCG vaccination significantly reduced morbidity and mortality associated with influenza virus but not SARS-CoV-2 infection.<sup>25</sup> In a random-



**Figure 3 (facing page). Subgroup Analyses.**

Subgroup analyses of the primary outcomes — symptomatic Covid-19 (Panel A) and severe Covid-19 (Panel B) — are shown with the use of forest plots of the difference in percentage points and 95% confidence intervals, with adjustment for stratification factors used in randomization. The widths of the confidence intervals have not been adjusted for multiplicity and may not be used in place of hypothesis testing. The body-mass index is the weight in kilograms divided by the square of the height in meters. We did not estimate the treatment effect within the geographic region of Australia because there were no episodes of symptomatic Covid-19 or severe Covid-19 there.

ized, controlled trial of neonatal BCG vaccination, *in vitro* immune responses varied according to pathogen type.<sup>30</sup> Furthermore, in contrast to previously observed BCG-induced enhancement of *in vitro* cytokine responses to unrelated pathogens,<sup>31,32</sup> responses to SARS-CoV-2 are decreased by BCG vaccination in adults.<sup>33</sup> Factors that could have influenced off-target effects of the BCG vaccine in our trial include the predominance of female participants (in whom off-target effects are proposed to differ as compared with males)<sup>34</sup> and the underrepresentation of participants who had not previously received the BCG vaccine.

Off-target effects of the BCG vaccine are proposed to, at least in part, be underpinned by epigenetic modifications in immune cells that induce a proinflammatory state and stronger cytokine responses to subsequent challenge with unrelated pathogens.<sup>31,32</sup> Stronger immune responses can be beneficial to clear infections but might also increase symptoms. In a human malaria challenge model, participants who received the BCG-Bulgaria vaccine had an earlier onset of symptoms and overall more severe clinical symptoms than unvaccinated controls.<sup>35</sup> In theory, an increased risk of symptomatic Covid-19 could be explained by a BCG-induced stronger immune response. BCG-vaccinated participants in the BRACE trial had more activated and effector T cells in response to *in vitro* SARS-CoV-2 stimulation than controls.<sup>33</sup> These effects might result in more rapid clearance of SARS-CoV-2, leading to a shorter illness. There was some evidence of this in our trial in post hoc subgroup analyses: the duration of symptoms was lower in

the BCG group than in the placebo group, although this finding was limited to participants 60 years of age or older and those without coexisting conditions.

In our trial, more than three quarters of the participants had previously received the BCG vaccine. It has been proposed that the off-target effects of BCG vaccination might be greater in those who have previously received the vaccine than in those who have not.<sup>36</sup> However, it is also possible that revaccination does not induce any incremental off-target benefit over that provided by previous BCG vaccination.<sup>37</sup> It is interesting that in our trial, there was weak evidence of a higher incidence of severe Covid-19 in the BCG group than in the placebo group among participants who had not previously received the BCG vaccine but not among those who received BCG revaccination.

Our trial has several strengths. These include its robust design, large size, recruitment in 36 sites across three continents, blinding of trial-group assignments, stringent Covid-19 case definitions, close active follow-up of participants with daily data collection during illnesses, serologic tests every 3 months, a 98% follow-up rate, and a statistical analysis that accounted for Covid-19-specific vaccination.

The main limitations of our trial were the inability to recruit the planned sample and reduced participant observation time for the primary analysis resulting from the earlier-than-expected availability of Covid-19-specific vaccines. This means that the trial was underpowered and susceptible to type II error, and therefore it is possible that BCG vaccine increases the risk of Covid-19. Another limitation is that the trial definition of severe Covid-19 differed from that more widely used in Covid-19 studies, which commonly includes only hospitalization and death. More than 90% of participants who were categorized as having severe Covid-19 were captured solely by virtue of being “too sick to go to work” (71%) or “unable to get out of bed” (22%) for at least 3 consecutive days. The effect on severe Covid-19 as more commonly defined by hospitalization or death could not be meaningfully analyzed owing to the infrequency of these events. The possibility that BCG vaccine induces a stronger immune response that leads to more

symptomatic disease but more rapid clearance of SARS-CoV-2 and consequent reduced hospitalizations and deaths therefore could not be assessed. Another limitation was that our definition of symptomatic Covid-19 was limited to the original case definition that did not include non-febrile episodes without respiratory symptoms. Finally, blinding is a challenge in BCG trials, even with a placebo, owing to the injection-site reaction that develops in most persons. This limitation was mitigated by informing participants that BCG vaccination does not always cause a reaction (so that trial-group assignment could not be inferred from the absence of a reaction or scar), using objective primary outcomes, and blinding with respect to data collection and analysis. However, participant presumption of trial group might have influenced adherence to Covid-19 control measures, decisions to receive influenza or Covid-19-specific vaccines, participant reporting of symptoms, or SARS-CoV-2 testing.

In this trial, BCG-Denmark vaccination did not reduce the risk of Covid-19 in health care workers, and the results did not exclude the possibility of an increased risk. Any effect on severe disease as defined by hospitalization or death could not be assessed. It is important that our findings are not extrapolated beyond the effect of BCG-Denmark vaccine on Covid-19 in health care workers. Several studies show beneficial off-target effects of the BCG vaccine in other situations, particularly among infants in high-

mortality geographic settings,<sup>4</sup> and ongoing research is examining potential underlying immunologic mechanisms.<sup>38,39</sup>

Supported by grants from the Bill and Melinda Gates Foundation (INV-017302), the Minderoo Foundation (COV-001), the Royal Children's Hospital Foundation (2020-1263 BRACE Trial), the Australian National Health and Medical Research Council (1194694, to Dr. Gwee; 1127984, to Dr. Lee; 2008911, to Dr. Perrett; 1155066, to Dr. Marshall; and 1197117, to Dr. Curtis), the Swiss National Science Foundation (P2GEP3\_178155, to Dr. Pittet), EMBL Australia (to Dr. Lynn), and the U.K. Medical Research Council (MR/N006364/2, to Dr. Warris) and by Sarah and Lachlan Murdoch, Health Services Union NSW, the Peter Sowerby Foundation, SA Health, the Insurance Advisernet Foundation, the NAB Foundation, the Calvert-Jones Foundation, the Modara Pines Charitable Foundation, the UHG Foundation, Epworth HealthCare, and individual donors. The Murdoch Children's Research Institute leads the BRACE trial across 36 sites in five countries; it is supported by the Victorian Government Operational Infrastructure Support Programme.

Disclosure forms provided by the authors are available with the full text of this article at NEJM.org.

A data sharing statement provided by the authors is available with the full text of this article at NEJM.org.

We thank the trial participants and the site personnel who recruited participants and assisted with the trial (detailed in the Supplementary Appendix); the staff of AJ Vaccines for facilitating BCG vaccine supplies; the staff of Devon Freewheelers for U.K. transport; the staff of Catalent for drug management; the staff of WeGuide and Curve Tomorrow for app development and support; the staff of the Fiocruz Clinical Research Platform for coordination and monitoring of sites in Brazil; the Pharmacy, Pathology, and Immunisation Service teams from the Royal Children's Hospital Melbourne; and the Orygen group for their support. We also thank the members of the data and safety monitoring board (Drs. Colin Powell [Cardiff University], Adam Finn [University of Bristol], and Julie Simpson [University of Melbourne]) and the trial steering committee for their oversight, as well as Drs. Denise Faustman, Rick Malley, Michael Mina, Mihai Netea, Frank Shann, Annie Sparrow, and Kanta Subbarao for their support and advice.

#### APPENDIX

The authors' full names and academic degrees are as follows: Laure F. Pittet, Ph.D., Nicole L. Messina, Ph.D., Francesca Orsini, M.Sc., Cecilia L. Moore, Ph.D., Veronica Abruzzo, M.Clin.Epi., Simone Barry, Ph.D., Rhian Bonnici, B.Sc., Marc Bonten, Ph.D., John Campbell, M.D., Julio Croda, Ph.D., Margaret Dalcolmo, Ph.D., Kaya Gardiner, M.P.H., Grace Gell, B.Sc., Susie Germano, B.Sc., Adriano Gomes-Silva, Ph.D., Casey Goodall, B.Eng., Amanda Gwee, Ph.D., Tenaya Jamieson, M.Sc., Bruno Jardim, M.Sc., Tobias R. Kollmann, Ph.D., Marcus V.G. Lacerda, Ph.D., Katherine J. Lee, Ph.D., Michaela Lucas, M.D., David J. Lynn, Ph.D., Laurens Manning, Ph.D., Helen S. Marshall, M.D., Ellie McDonald, Ph.D., Craig F. Munns, Ph.D., Suellen Nicholson, B.Sc., Abby O'Connell, Ph.D., Roberto D. de Oliveira, Ph.D., Susan Perlen, Ph.D., Kirsten P. Perrett, Ph.D., Cristina Prat-Aymerich, Ph.D., Peter C. Richmond, M.B., B.S., Jesus Rodriguez-Baño, Ph.D., Glaucé dos Santos, M.Sc., Patricia V. da Silva, Ph.D., Jia Wei Teo, B.Sc., Paola Villanueva, B.Med.Sc., Adilia Warris, Ph.D., Nicholas J. Wood, Ph.D., Andrew Davidson, M.D., and Nigel Curtis, Ph.D.

The authors' affiliations are as follows: the Infectious Diseases Group (L.F.P., N.L.M., V.A., R.B., K.G., G.G., S.G., C.G., A.G., T.J., E.M., S.P., J.W.T., P.V., N.C.), Melbourne Children's Trials Centre (F.O., C.L.M., K.J.L., K.P.P., A.D.), and the Clinical Epidemiology and Biostatistics Unit (F.O., C.L.M., K.J.L.), Murdoch Children's Research Institute, the Department of Paediatrics, University of Melbourne (L.F.P., N.L.M., A.G., K.J.L., K.P.P., P.V., N.C.), the Infectious Diseases Unit (L.F.P., A.G., P.V., N.C.), Research Operations (K.G.), and the Department of Allergy and Immunology (K.P.P.), Royal Children's Hospital Melbourne, and the Victorian Infectious Diseases Reference Laboratory, Royal Melbourne Hospital, Peter Doherty Institute for Infection and Immunity (S.N.), Parkville, VIC, Precision Medicine Theme, South Australian Health and Medical Research Institute (S.B., D.J.L.), the Department of Thoracic Medicine, Royal Adelaide Hospital (S.B.), and Adelaide Medical School and Robinson Research Institute, University of Adelaide (H.S.M.), Adelaide, SA, Wesfarmers Centre of Vaccines and Infectious Diseases, Telethon Kids Institute (T.R.K., L.M., P.C.R.), the Department of Immunology, PathWest, Queen Elizabeth II Medical Centre (M.L.), the Department of Immunology, Sir Charles Gairdner Hospital (M.L.), and the Department of Immunology and General Paediatrics, Perth Children's Hospital (M.L., P.C.R.), Nedlands, WA, the University of Western Australia Medical School, Perth (M.L., L.M., P.C.R.), Flinders Health and Medical Research Institute, Flinders University, Bedford Park, SA (D.J.L.), the Department of Infectious Diseases, Fiona Stanley Hospital, Murdoch, WA (L.M.), the Vaccinology and Immunology Research Trials Unit, Women's and Children's Health Network, North Adelaide, SA (H.S.M.), the Department of

Endocrinology and Diabetes, Children's Hospital at Westmead (C.F.M.), Sydney Children's Hospitals Network (N.J.W.), and the National Centre for Immunisation Research and Surveillance of Vaccine Preventable Disease (N.J.W.), Westmead, NSW, and the Faculty of Medicine and Health, University of Sydney, Sydney (C.F.M., N.J.W.) — all in Australia; the Infectious Diseases Unit, Department of Pediatrics, Gynecology, and Obstetrics, Faculty of Medicine, University of Geneva and University Hospitals of Geneva, Geneva (L.F.P.); the Julius Center for Health Sciences and Primary Care, University Medical Center Utrecht, Utrecht University, Utrecht, the Netherlands (M.B., C.P.-A.); Exeter Collaboration for Academic Primary Care (J. Campbell) and Exeter Clinical Trials Unit (A.O.), University of Exeter Medical School, and the Medical Research Council Centre for Medical Mycology, University of Exeter (A.W.) — both in Exeter, United Kingdom; Fiocruz Mato Grosso do Sul, Fundação Oswaldo Cruz (J. Croda), and Universidade Federal de Mato Grosso do Sul (J. Croda, R.D.O., P.V.S.), Campo Grande, Helio Fraga Reference Center, Oswaldo Cruz Foundation Ministry of Health (M.D., G.S.), Catholic University (M.D.), and Laboratório Interdisciplinar de Pesquisas Médicas, Instituto Oswaldo Cruz, Fundação Oswaldo Cruz (A.G.-S.), Rio de Janeiro, and the Institute of Clinical Research Carlos Borborema, Doctor Heitor Vieira Dourado Tropical Medicine Foundation (B.J., M.V.G.L.), and Instituto Leônidas and Maria Deane, Oswaldo Cruz Foundation Ministry of Health (M.V.G.L.), Manaus — all in Brazil; the Department of Epidemiology of Microbial Diseases, Yale School of Public Health, New Haven, CT (J. Croda); University of Texas Medical Branch, Galveston (M.V.G.L.); and Institut d'Investigació Germans Trias i Pujol, Departament de Genètica i Microbiologia, Universitat Autònoma de Barcelona, Centro de Investigación Biomédica en Red (CIBER) de Enfermedades Respiratorias, Instituto de Salud Carlos III, Badalona, Barcelona (C.P.-A.), the Division of Infectious Diseases and Microbiology, Hospital Universitario Virgen Macarena, and the Department of Medicine, University of Seville, Biomedicine Institute of Seville—Consejo Superior de Investigaciones Científicas, Seville (J.R.-B.), and CIBER de Enfermedades Infecciosas, Instituto de Salud Carlos III, Madrid (J.R.-B.) — all in Spain.

## REFERENCES

- Pollard AJ, Finn A, Curtis N. Non-specific effects of vaccines: plausible and potentially important, but implications uncertain. *Arch Dis Child* 2017;102:1077-81.
- Fritschi N, Curtis N, Ritz N. Bacille Calmette Guérin (BCG) and new TB vaccines: specific, cross-mycobacterial and off-target effects. *Paediatr Respir Rev* 2020;36:57-64.
- Moorlag SJCFM, Arts RJW, van Crevel R, Netea MG. Non-specific effects of BCG vaccine on viral infections. *Clin Microbiol Infect* 2019;25:1473-8.
- Higgins JP, Soares-Weiser K, López-López JA, et al. Association of BCG, DTP, and measles containing vaccines with childhood mortality: systematic review. *BMJ* 2016;355:i5170.
- Wardhana, Datau EA, Sultana A, Mandang VV, Jim E. The efficacy of Bacillus Calmette-Guérin vaccinations for the prevention of acute upper respiratory tract infection in the elderly. *Acta Med Indones* 2011;43:185-90.
- Giamarellos-Bourboulis EJ, Tsilika M, Moorlag S, et al. Activate: randomized clinical trial of BCG vaccination against infection in the elderly. *Cell* 2020;183(2):315-323.e9.
- Nemes E, Geldenhuys H, Rozot V, et al. Prevention of *M. tuberculosis* infection with H4:IC31 vaccine or BCG revaccination. *N Engl J Med* 2018;379:138-49.
- Curtis N, Sparrow A, Ghebreyesus TA, Netea MG. Considering BCG vaccination to reduce the impact of COVID-19. *Lancet* 2020;395:1545-6.
- Netea MG, Giamarellos-Bourboulis EJ, Domínguez-Andrés J, et al. Trained immunity: a tool for reducing susceptibility to and the severity of SARS-CoV-2 infection. *Cell* 2020;181:969-77.
- Pittet LF, Messina NL, Gardiner K, et al. BCG vaccination to reduce the impact of COVID-19 in healthcare workers: protocol for a randomised controlled trial (BRACE trial). *BMJ Open* 2021;11(10):e052101.
- Orsini F. BRACE — statistical analysis plan for interim analysis. Murdoch Children's Research Institute. June 2, 2021 ([https://mcrici.figshare.com/articles/online\\_resource/BRACE\\_Statistical\\_Analysis\\_Plan\\_for\\_Interim\\_Analysis/14721309](https://mcrici.figshare.com/articles/online_resource/BRACE_Statistical_Analysis_Plan_for_Interim_Analysis/14721309)).
- Harris PA, Taylor R, Thielke R, Payne J, Gonzalez N, Conde JG. Research electronic data capture (REDCap) — a meta-data-driven methodology and workflow process for providing translational research informatics support. *J Biomed Inform* 2009;42:377-81.
- Bond KA, Williams E, Nicholson S, et al. Longitudinal evaluation of laboratory-based serological assays for SARS-CoV-2 antibody detection. *Pathology* 2021;53:773-9.
- Orsini F. BRACE trial statistical analysis plan. Murdoch Children's Research Institute. August 28, 2022 ([https://mcrici.figshare.com/articles/online\\_resource/BRACE\\_Trial\\_SAP/19836157](https://mcrici.figshare.com/articles/online_resource/BRACE_Trial_SAP/19836157)).
- Khera D, Chugh A, Khasbage S, Singh S. Does Bacille Calmette-Guérin vaccination provides protection against COVID-19: a systematic review and meta-analysis. *Indian J Community Med* 2021;46:592-9.
- Tsilika M, Taks E, Dolianitis K, et al. ACTIVATE-2: a double-blind randomized trial of BCG vaccination against COVID-19 in individuals at risk. *Front Immunol* 2022;13:873067.
- Upton CM, van Wijk RC, Mockeliunas L, et al. Safety and efficacy of BCG revaccination in relation to COVID-19 morbidity in healthcare workers: a double-blind, randomised, controlled, phase 3 trial. *EClinicalMedicine* 2022;48:101414.
- Ten Doerschate T, van der Vaart TW, Debisarun PA, et al. Bacillus Calmette-Guérin vaccine to reduce healthcare worker absenteeism in COVID-19 pandemic, a randomized controlled trial. *Clin Microbiol Infect* 2022;28:1278-85.
- Moorlag SJCFM, Taks E, Ten Doerschate T, et al. Efficacy of BCG vaccination against respiratory tract infections in older adults during the coronavirus disease 2019 pandemic. *Clin Infect Dis* 2022;75(1):e938-e946.
- Dos Anjos LRB, da Costa AC, Cardoso ADRO, et al. Efficacy and safety of BCG revaccination with *M. bovis* BCG Moscow to prevent COVID-19 infection in health care workers: a randomized phase II clinical trial. *Front Immunol* 2022;13:841868.
- Czajka H, Zapolnik P, Krzych Ł, et al. A multi-center, randomised, double-blind, placebo-controlled phase III clinical trial evaluating the impact of BCG re-vaccination on the incidence and severity of SARS-CoV-2 infections among symptomatic healthcare professionals during the COVID-19 pandemic in Poland — first results. *Vaccines (Basel)* 2022;10:314.
- Amirlak L, Haddad R, Hardy JD, Khaled NS, Chung MH, Amirlak B. Effectiveness of booster BCG vaccination in preventing Covid-19 infection. *Hum Vaccin Immunother* 2021;17:3913-5.
- Faustman DL, Lee A, Hostetter ER, et al. Multiple BCG vaccinations for the prevention of COVID-19 and other infectious diseases in type 1 diabetes. *Cell Rep Med* 2022;3:100728.
- Hilligan KL, Namasivayam S, Clancy CS, et al. Intravenous administration of BCG protects mice against lethal SARS-CoV-2 challenge. *J Exp Med* 2022;219(2):e20211862.
- Kaufmann E, Khan N, Tran KA, et al. BCG vaccination provides protection against IAV but not SARS-CoV-2. *Cell Rep* 2022;38:110502.
- White AD, Sibley L, Sarfas C, et al. Influence of aerosol delivered BCG vaccination on immunological and disease parameters following SARS-CoV-2 challenge in rhesus macaques. *Front Immunol* 2021;12:801799.
- Counoupas C, Johansen MD, Stella AO, et al. A single dose, BCG-adjuvanted COVID-19 vaccine provides sterilising immunity against SARS-CoV-2 infection. *NPJ Vaccines* 2021;6:143.
- Ritz N, Hanekom WA, Robins-Browne

- R, Britton WJ, Curtis N. Influence of BCG vaccine strain on the immune response and protection against tuberculosis. *FEMS Microbiol Rev* 2008;32:821-41.
29. Ritz N, Dutta B, Donath S, et al. The influence of bacille Calmette-Guérin vaccine strain on the immune response against tuberculosis: a randomized trial. *Am J Respir Crit Care Med* 2012;185:213-22.
30. Freyne B, Messina NL, Donath S, et al. Neonatal BCG vaccination reduces interferon- $\gamma$  responsiveness to heterologous pathogens in infants from a randomized controlled trial. *J Infect Dis* 2020;221:1999-2009.
31. Netea MG, Joosten LA, Latz E, et al. Trained immunity: a program of innate immune memory in health and disease. *Science* 2016;352(6284):aaf1098.
32. Netea MG, Quintin J, van der Meer JW. Trained immunity: a memory for innate host defense. *Cell Host Microbe* 2011;9:355-61.
33. Messina NL, Germano S, McElroy R, et al. Off-target effects of bacillus Calmette-Guérin vaccination on immune responses to SARS-CoV-2: implications for protection against severe COVID-19. *Clin Transl Immunology* 2022;11(4):e1387.
34. Flanagan KL, Plebanski M. Sex-differential heterologous (non-specific) effects of vaccines: an emerging public health issue that needs to be understood and exploited. *Expert Rev Vaccines* 2017;16:5-13.
35. Walk J, de Bree LCJ, Graumans W, et al. Outcomes of controlled human malaria infection after BCG vaccination. *Nat Commun* 2019;10:874.
36. Aaby P, Netea MG, Benn CS. Beneficial non-specific effects of live vaccines against COVID-19 and other unrelated infections. *Lancet Infect Dis* 2023;23(1):e34-e42.
37. Debisarun PA, Kilic G, de Bree LCJ, et al. The impact of BCG dose and revaccination on trained immunity. *Clin Immunol* 2023;246:109208.
38. Prentice S, Nassanga B, Webb EL, et al. BCG-induced non-specific effects on heterologous infectious disease in Ugandan neonates: an investigator-blind randomised controlled trial. *Lancet Infect Dis* 2021;21:993-1003.
39. Bannister S, Kim B, Domínguez-Andrés J, et al. Neonatal BCG vaccination is associated with a long-term DNA methylation signature in circulating monocytes. *Sci Adv* 2022;8(31):eabn4002.

Copyright © 2023 Massachusetts Medical Society.

**POSTING PRESENTATIONS FROM MEDICAL MEETINGS ONLINE**

Online posting of an audio or video recording of an oral presentation at a medical meeting, with selected slides from the presentation, is not considered prior publication. Authors should feel free to call or send email to the *Journal's* Editorial Offices if there are any questions about this policy.